

APPROVED MINUTES



ACME TOWNSHIP PARKS & TRAILS COMMITTEE MEETING 6042 Acme Road US 31 N Williamsburg, MI 49690 November 22, 2022 4:00 p.m.

CALL TO ORDER at 4:10 p.m.

ROLL CALL

Committee Members present: Huffer, Jenema, Wielenga, Schmitz

Committee Members excused: Morrison, LaPointe, DeVogel

Advisory present: None

Staff present: L. Wolf, Planning & Zoning Administrator, R. Lamott

A. PUBLIC COMMENT: None

B. APPROVAL OF AGENDA

Motion by Huffer supported by Schmitz to approve the Agenda as presented. No discussion. Voice vote. Motion carried unanimously.

C. INQUIRY AS TO CONFLICTS OF INTEREST: None

D. CORRESPONDENCE: None

E. ACTION:

1. Approve *Draft Parks & Trails Minutes 09.19.2022*

Motion by Jenema, supported by Schmitz, to approve the *Draft Parks & Trails Minutes 09.19.2022* as presented. No discussion. Voice vote. Motion carried unanimously.

F. OLD BUSINESS:

1. Bayside Playground Expansion

Discussion of quotes and Spark Grant eligibility. Discussion of what to present to the township board. Discussion on pathways, pavilion, and playground equipment. Board to prioritize what to ask for.

2. Update on Wet Garden

Update to be provided at a future meeting.

3. Life Jacket Library

Tabled until 2023.

G. NEW BUSINESS

1. Spark Grant

Slide show presentation. Discussion of what is ADA compliant in current plan. Quote will need to be obtained for grant.

2. Solar Lights

Discussion of solar lights near walking paths at Bayside and Saylor Park. Cost of \$2,000 per light. Discussion to resume next spring on parks and trails terms.

H. PUBLIC COMMENT: None

ADJOURN: Motion by Jenema, supported by Schmitz to adjourn. No discussion. Voice vote. Motion carried unanimously.

Meeting adjourned at 5:07 p.m.

Respectfully,
Lindsey Wolf



ACME TOWNSHIP PARKS & TRAILS MEETING
Acme Township Hall
6042 Acme Road Williamsburg, MI 49690
November 21, 2022 4:00 p.m.

ROLL CALL:

Committee:

	Huffer		Jenema		LaPointe		DeVogel
	Schmitz		Morrison		Wielenga		
Advisory:	Kushman		Lamott				
Staff:	Wolf						

A. PUBLIC COMMENT:

B. APPROVAL OF AGENDA:

C. INQUIRY AS TO CONFLICTS OF INTEREST:

D. CORRESPONDENCE:

1. None

E. ACTION:

1. Approve Draft Parks & Trails Minutes 9.19.2022

F. OLD BUSINESS:

1. Bayside Playground Expansion
2. Wet Garden - update
3. Life Jacket Library

G. NEW BUSINESS:

1. Spark Grant
2. Solar Lights – cost

H. PUBLIC COMMENT

ADJOURN:

DRAFT UNAPPROVED



**ACME TOWNSHIP PARKS & TRAILS COMMITTEE
MEETING
6042 Acme Road
US 31 N Williamsburg, MI 49690
September 19, 2022 4:00 p.m.**

CALL TO ORDER at 4:04 p.m.

ROLL CALL

Committee Members present: Jenema, DeVogel, Wielenga, Schmitz

Committee Members excused: Morrison, Huffer, LaPointe

Advisory present: None

Staff present: L. Wolf, Planning & Zoning Administrator, R. Lamott

A. PUBLIC COMMENT: None

B. APPROVAL OF AGENDA

Motion by Jenema supported by DeVogel to approve the Agenda as presented. No discussion. Voice vote. Motion carried unanimously.

C. INQUIRY AS TO CONFLICTS OF INTEREST: None

D. CORRESPONDENCE: None

E. ACTION:

1. Approve *Draft Parks & Trails Minutes 09.19.2022*

Motion by Jenema, supported by DeVogel, to approve the *Draft Parks & Trails Minutes 09.19.2022* as presented. No discussion. Voice vote. Motion carried unanimously.

F. OLD BUSINESS:

1. Bayside Playground Expansion

Wielenga is waiting for a response on the estimates. The committee will meet again to discuss once received to bring to the board for winter. Schmitz was brought up to date.

2. Trails update

A ribbon cutting ceremony will be held on October 25th. Parking locations for the trail at Bayside and Meijer were discussed. Wolf will email the committee the time and location of the ribbon cutting.

3. Update on Wet Garden

Update to be provided at a future meeting.

4. Election of Officers

Jenema nominates DeVogel for secretary, seconded by Schmitz. No discussion. Voice vote. Motion carried unanimously.

G. NEW BUSINESS

1. Projects for Eagle Scouts

1. Flag retirement -ongoing
2. Stripping and staining of signs at Yuba and Tobeco
3. Bayside sign mounted on building – Scout project

4. Strip and seal picnic tables at Sayler and Bayside
5. Pavilion at Bayside – remove lattice, strip, seal, bracing
6. Benches at nature preserve – rebuild backed bench
7. Redo bird houses and posts at nature preserve – types of houses and bat boxes
8. Paint bath house doors with township logo
9. Kiosk at upper and lower nature preserve – update with posters
10. Bayside clean up/parks clean up
11. Staining and water sealing upper and lower nature preserve fences
12. Benches at Sayler – welding class project

H. PUBLIC COMMENT: None

ADJOURN: Motion by Jenema, supported by Schmitz to adjourn. No discussion. Voice vote. Motion carried unanimously.

Meeting adjourned at 4:52 p.m.

Respectfully,
Lindsey Wolf



563 College Avenue, Holland, MI 49423
Ph: 616-395-2565 or 800-685-6291
Fx: 616-395-2556
Email: heathervk@playenviro.com

Acme Twp Bayside Park

BILL TO:

Acme Twp
ATTN: Nate & Mat
6042 Acme Road
Williamsburg MI 49690
Contact e-mail

REVISED QUOTE

Site Work Only for Whole Area

10/15/2022

SHIP TO:

Acme Twp
6042 Acme Road
Williamsburg MI 49690
PHONE (231) 938-1350
FAX (231) 938-1510

Table with columns: QTY, MODEL NUMBER, VND TX, DESCRIPTION, VEIGH, UNIT PRICE, EXT. PRICE. Includes items like Concrete Curb, Geo Fabric, EWF, and Site Restoration.

COMMENTS: Prices good for 30 days w/2021 Delivery.
THE PRICE DOES NOT INCLUDE: TAX, UNLOADING, TRASH REMOVAL
SURFACING, SITE WORK, INSTALLATION, OR BAD DIGGING CONDITIONS
UNLESS SPECIFICALLY QUOTED.

SUB-TOTAL: 74,526.00

TOTAL: \$ 74,526.00

SIGNED: _____ ACCEPTED BY: _____
Joshua Cartwright

MAKE PURCHASE ORDERS OUT TO: Play Environments Design, 563 College, Holland, MI 49423
Acceptance of this quote indicates your agreement to abide by Play Environments Design terms of sale
TERMS: TBD



563 College Avenue, Holland, MI 49423
Ph: 616-395-2565 or 800-685-6291
Fx: 616-395-2556
Email: heathervk@playenviro.com

Acme Twp Bayside Park

BILL TO:

Acme Twp
ATTN: Nate & Mat
6042 Acme Road
Williamsburg MI 49690
Contact e-mail

REVISED QUOTE

2-5 Playground Only Quote

10/15/2022

SHIP TO:

Acme Twp
6042 Acme Road
Williamsburg MI 49690
PHONE (231) 938-1350
FAX (231) 938-1510

<u>QTY</u>	<u>MODEL NUMBER</u>	<u>VND TX</u>	<u>DESCRIPTION</u>	<u>VEIGH'</u>	<u>UNIT PRICE</u>	<u>EXT. PRICE</u>
1	R501D5C0A	PC	2-5 Structure R5 Pole's		23,914.00	23,914.00
1	A2-2123	PC	Arch Swing 2 Seat		2,894.00	2,894.00
2	A2-131510	PC	Playshare Seat		1,350.00	2,700.00
1	A2-1384	PC	Fish Spring Rider		1,521.00	1,521.00
1	A2-1395	PC	Dual Airplane Spring Rider		2,729.00	2,729.00
1	Freight		Freight to Williamsburg MI		10,000.00	10,000.00
1	Sum	PS	Equipment Installation		10,549.00	10,549.00
90	Units	PS	Concrete		6.00	540.00
					-	-
					-	-
					-	-
					-	-
					-	-
					-	-
					-	-
					-	-
					-	-
					-	-
					-	-
					-	-
					-	-
					-	-
					-	-
					-	-
					-	-
					-	-
					-	-
					-	-
					-	-
					-	-
					-	-
					-	-
					-	-
					-	-
					-	-

COMMENTS: Prices good for 30 days w/2023 Delivery.
THE PRICE DOES NOT INCLUDE: TAX, UNLOADING, TRASH REMOVAL
SURFACING, SITE WORK, INSTALLATION, OR BAD DIGGING CONDITIONS
UNLESS SPECIFICALLY QUOTED.

SUB-TOTAL: 54,847.00

TOTAL: \$ 54,847.00

SIGNED: _____ **ACCEPTED BY:** _____
Joshua Cartwright

MAKE PURCHASE ORDERS OUT TO: Play Environments Design, 563 College, Holland, MI 49423
Acceptance of this quote indicates your agreement to abide by Play Environments Design terms of sale
TERMS: TBD

ACME TWP - BAYSIDE PARK

TOP VIEW

ADA ACCESSIBILITY GUIDELINE - ADAAG CONFORMANCE

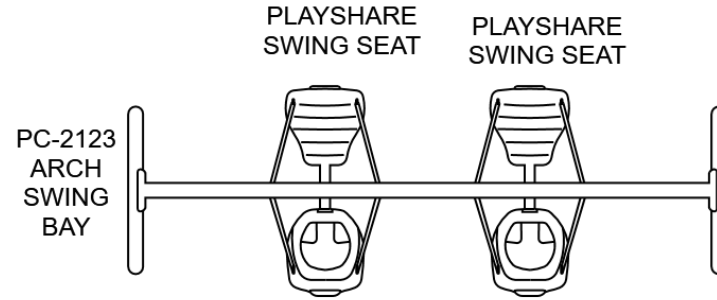
ELEVATED	ACCESSIBLE	RAMP ACCESSIBLE	GROUND	TYPES
0	0/0	0	2/0	1/0

FOR KIDS
AGES
5-12

GENERAL NOTES:

This conceptual plan is based on information provided prior to construction. Detailed site information, including the following, should be obtained, evaluated, and utilized in the final project design. Exact site dimensions, topography, existing utilities, soil conditions and drainage solutions.

WARNING: Accessible safety surfacing material is required beneath and around this equipment that has a critical height value (Fall Height) appropriate for the highest accessible part of this equipment. Refer to the CPSC'S Handbook For Public Playground Safety, Section 4: Surfacing.



STRUCTURE#: FREPC2123

PROJECT#: PEI224881EA

DATE: 10/15/2022

MIN. USE ZONE: 24' x 31'

PLAYCRAFT REP:

Play Environments Design LLC

ACME TWP - BAYSIDE PARK

TOP VIEW

ADA ACCESSIBILITY GUIDELINE - ADAAG CONFORMANCE

ELEVATED	ACCESSIBLE	RAMP ACCESSIBLE	GROUND	TYPES
0	0/0	0	1/0	1/0

FOR KIDS
AGES
2-5

GENERAL NOTES:

This conceptual plan is based on information provided prior to construction. Detailed site information, including the following, should be obtained, evaluated, and utilized in the final project design. Exact site dimensions, topography, existing utilities, soil conditions and drainage solutions.

WARNING: Accessible safety surfacing material is required beneath and around this equipment that has a critical height value (Fall Height) appropriate for the highest accessible part of this equipment. Refer to the CPSC'S Handbook For Public Playground Safety, Section 4: Surfacing.

PC 1384
FISH
SPRING
RIDER



STRUCTURE#: FREPC1384

PROJECT#: PEI224881EA

DATE: 10/15/2022

MIN. USE ZONE: 13' x 15'

PLAYCRAFT REP:

Play Environments Design LLC

ACME TWP - BAYSIDE PARK

TOP VIEW

ADA ACCESSIBILITY GUIDELINE - ADAAG CONFORMANCE

ELEVATED	ACCESSIBLE	RAMP ACCESSIBLE	GROUND	TYPES
0	0/0	0	1/0	1/0

FOR KIDS
AGES
5-12

GENERAL NOTES:

This conceptual plan is based on information provided prior to construction. Detailed site information, including the following, should be obtained, evaluated, and utilized in the final project design. Exact site dimensions, topography, existing utilities, soil conditions and drainage solutions.

WARNING: Accessible safety surfacing material is required beneath and around this equipment that has a critical height value (Fall Height) appropriate for the highest accessible part of this equipment. Refer to the CPSC'S Handbook For Public Playground Safety, Section 4: Surfacing.



PC 1395
DUAL
AIRPLANE
SPRING
RIDER

STRUCTURE#: FREPC1395

PROJECT#: PEI224881EA

DATE: 10/15/2022

MIN. USE ZONE: 13' x 16'

PLAYCRAFT REP:

Play Environments Design LLC

ACME TWP - BAYSIDE PARK

TOP VIEW

ADA ACCESSIBILITY GUIDELINE - ADAAG CONFORMANCE

ELEVATED	ACCESSIBLE	RAMP ACCESSIBLE	GROUND	TYPES
5	5/3	0	2/2	1/2

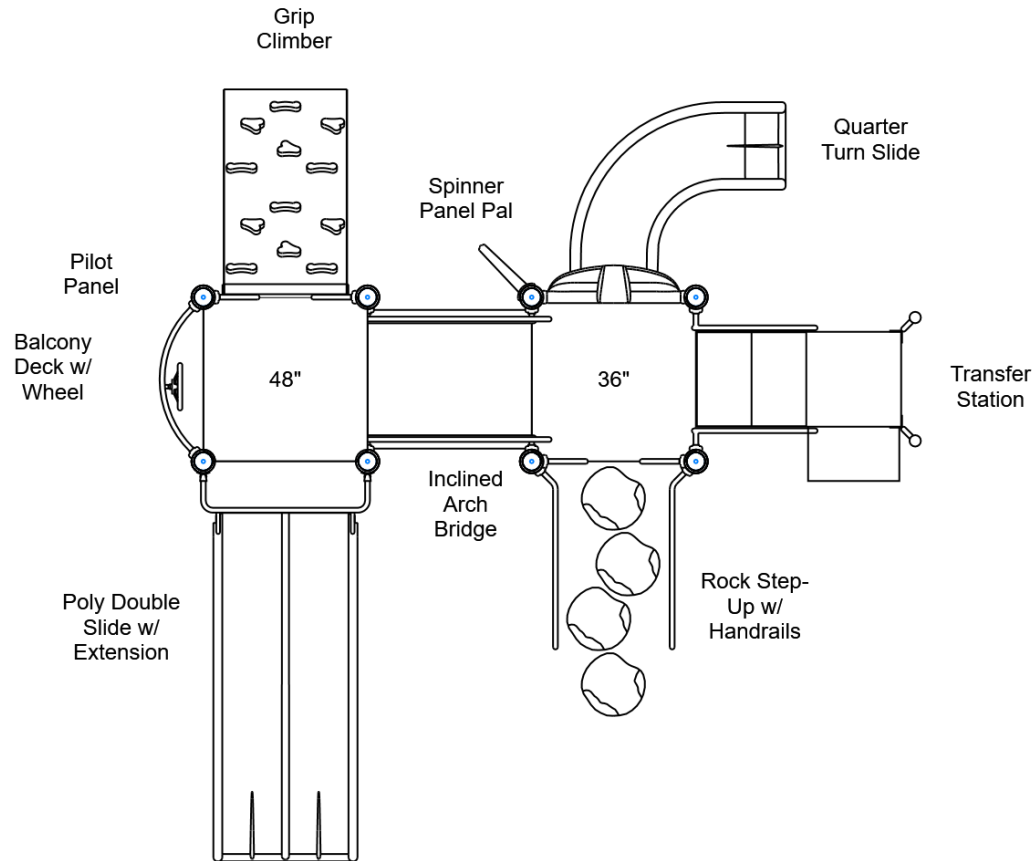
R5

FOR KIDS
AGES
2-5

GENERAL NOTES:

This conceptual plan is based on information provided prior to construction. Detailed site information, including the following, should be obtained, evaluated, and utilized in the final project design. Exact site dimensions, topography, existing utilities, soil conditions and drainage solutions.

WARNING: Accessible safety surfacing material is required beneath and around this equipment that has a critical height value (Fall Height) appropriate for the highest accessible part of this equipment. Refer to the CPSC'S Handbook For Public Playground Safety, Section 4: Surfacing.



STRUCTURE#: R501D5C0A

PROJECT#: PEI224881EA

DATE: 10/15/2022

MIN. USE ZONE: 30' x 30'

PLAYCRAFT REP:

Play Environments Design LLC

ACME TWP - BAYSIDE PARK

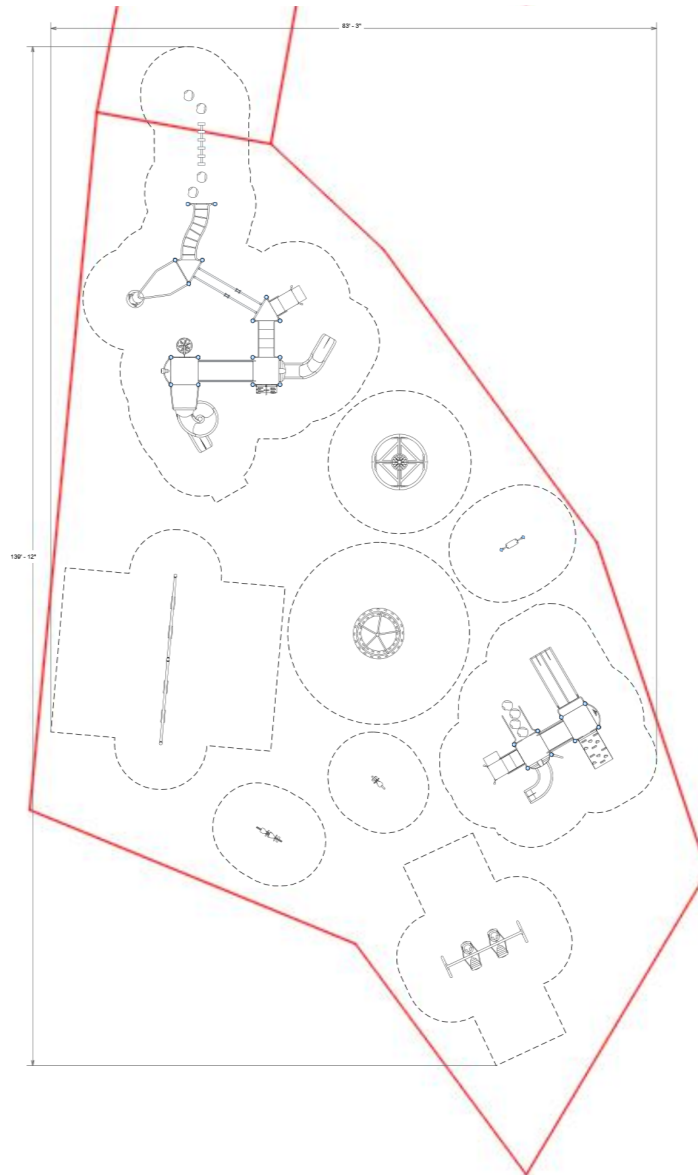
SITE PLAN

ADA ACCESSIBILITY GUIDELINE - ADAAG CONFORMANCE

ELEVATED	ACCESSIBLE	RAMP ACCESSIBLE	GROUND	TYPES
11	11/6	0	21/4	14/3

R5

FOR KIDS
AGES
[Mixed]



GENERAL NOTES:

This Preliminary Site Plan is based on measurements that were provided in the initial planning phase. All dimensions must be verified prior to the submission of a purchase order. Playcraft Systems will not be held responsible for any discrepancies between actual dimensions and dimensions submitted in the planning phase.

The Minimum Use Zone for a play structure is based on the product design at the time of proposal. Components and structure designs may be subject to change which may affect dimensions. Therefore, before preparing the site, we strongly recommend obtaining final drawings from the factory (available after the order is placed and included in the Assembly Manual).

WARNING: Accessible safety surfacing material is required beneath and around this equipment that has a critical height value (Fall Height) appropriate for the highest accessible part of this equipment. Refer to the CPSC'S Handbook For Public Playground Safety, Section 4: Surfacing.

PROJECT#: PEI224881EA
DATE: 10/15/2022

MIN. USE ZONE: 84' x 140'

PLAYCRAFT REP:
Play Environments Design LLC

ACME TWP - BAYSIDE PARK
SW VIEW

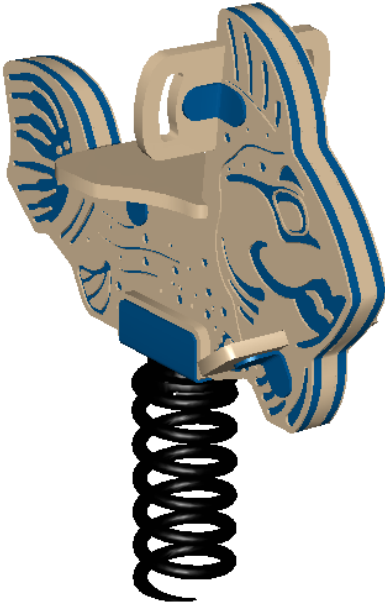
FOR KIDS
AGES
5-12



STRUCTURE#: FREPC2123
PROJECT#: PEI224881EA
DATE: 10/15/2022

ACME TWP - BAYSIDE PARK
SW VIEW

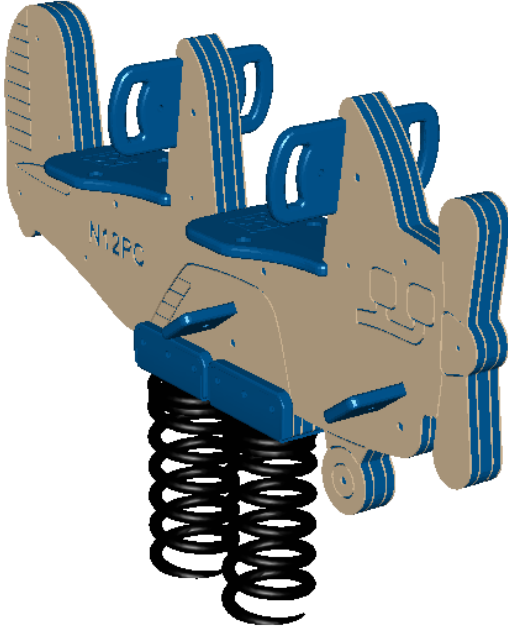
FOR KIDS
AGES
2-5



STRUCTURE#: FREPC1384
PROJECT#: PEI224881EA
DATE: 10/15/2022

ACME TWP - BAYSIDE PARK
SW VIEW

FOR KIDS
AGES
5-12



STRUCTURE#: FREPC1395
PROJECT#: PEI224881EA
DATE: 10/15/2022

ACME TWP - BAYSIDE PARK
SW VIEW

R5

FOR KIDS
AGES
2-5



STRUCTURE#: R501D5C0A
PROJECT#: PEI224881EA
DATE: 10/15/2022

ACME TWP - BAYSIDE PARK
NE VIEW

R5

FOR KIDS
AGES
2-5



STRUCTURE#: R501D5C0A
PROJECT#: PEI224881EA
DATE: 10/15/2022



Bill of Materials

ACME TWP - BAYSIDE PARK

Project# PEI224881EA

10/15/2022

Item	Description	Quantity
FREPC2123		
A2-131510	Playshare Seat	2
A2-2123	PC 2123-8ft Arch Swing Bay (2 Seat)	1
FREPC1384		
A2-1384	PC 1384 Fish Spring Rider	1
FREPC2181+AB		
A2-2181	PC 2181 8ft Single Post Swing Bay (2 Seat)	1
A2-2181-AB	PC 2181 8ft Single Post Swing Bay (2 Seat) AB	1
A2-313010	Belt Seat	4
FREPC2495		
A2-2495	PC 2495 Merry-Go-Round	1
FREPC2485		
A2-2485	PC 2485 Neutron Spinner	1
FREPC1395		
A2-1395	PC 1395 Dual Airplane Spring Rider	1
R35A95C9A		
HS-1004-R35	Collars	4
GG-8135	Dome Cap, R3.5	2
S-1009-R35-09ft	Post, 09ft R3.5	2
S-1948-R35	Surf Rider	1
R50E2500A		
HS-1004-R	Collars	49
GF-7002	Dome Cap, R5	16
S-1010-R5-10ft	Post, 10ft R5	1
S-1011-R5-11ft	Post, 11ft R5	3
S-1012-R5-12ft	Post, 12ft R5	8



Bill of Materials (continued)

Item	Description	Quantity
S-1014-R5-14ft	Post, 14ft R5	4
S-1101-R5	Square Deck	2
S-1102-R5	Tri-Deck	2
S-1109-R5-T	Balcony Deck w/ Telescope	1
S-1206-36R5	ADA Stairs, 36in Rise w/ Walls	1
S-1209-12-R5	Transfer Station, 24in-C	1
S-1214-5R5	Climber, Wall 60in	1
S-1234-7R	Climber, Spiral Step 78-84in	1
S-1301-R5	Wall, Steel 36in (Standard)	1
S-1303-TW-R5	Twister Entry Panel w/ Hood	1
S-1310-R5	Transition Wall	2
S-1402-R5	End Access Ladder (2-Rung)	1
S-1405-R-R5	Traverse, Horizontal Ladder (S-Shaped, Right)	1
S-1416-122R5	Traverse, Slider (122in)	1
S-1514-90R5	Bridge, Inclined Arch (90in)	1
S-1639-R5	Clubhouse	1
S-1706-S7L-R5	Slide, Twister Spiral 84in (L)	1
S-1710-5-LL	Slide, Twister 60in (L2)	1
S-1974-R5	Gyro-Pod Spinner	1
R501D5C0A		
HS-1004-R	Collars	25
GF-7002	Dome Cap, R5	8
S-1010-R5-10ft	Post, 10ft R5	4
S-1011-R5-11ft	Post, 11ft R5	4
S-1101-R5	Square Deck	2
S-1109-R5-MT	Balcony Deck w/ Wheel	1
S-1209-24-R5	Transfer Station, 36in-L	1
S-1216-4	Climber, Grip 42-48in	1
S-1303-R5	Single Slide SitDown Hood	1
S-1309-2-R5	Half Walls (Pair) R5	2



**Bill of Materials
(continued)**

Item	Description	Quantity
S-1514-45R5	Bridge, Inclined Arch (45in)	1
S-1643-R5G	Pilot Panel	1
S-1666-R5	Panel Pal, Spinner	1
S-1702-1122-4	Slide, Wave 48in (Double, w/ Extn)	1
S-1705-3	Slide, Quarter Turn 36in	1
S-1961-3-HH-R5	Climber, Step-Up 36in (Rock, Hand Rails)	1
FREPCS1961R/1		
S-1961-R	PC 2452 Rock Step	1
FREPCS1961R/2		
S-1961-R	PC 2452 Rock Step	1
FREPCS1961R/3		
S-1961-R	PC 2452 Rock Step	1
FREPCS1961R/4		
S-1961-R	PC 2452 Rock Step	1
FREPC2435		
A2-2435-W	PC 2435 Boardwalk, Wave	1

An aerial photograph of a coastal town. A main road runs diagonally from the bottom left towards the top right, parallel to a sandy beach. The water is a vibrant turquoise color. The town is filled with green trees and various buildings. The text "Michigan Spark Grants" is overlaid in the center in a bold, orange font.

Michigan Spark Grants

Introduction

Michigan Spark Grants are a \$65 million program that represents a milestone moment for outdoor recreation, helping local communities that want to create, renovate or redevelop public outdoor opportunities for residents and visitors – especially those whose economic opportunities and health were hardest hit by the COVID-19 pandemic.

Administered by the Michigan Department of Natural Resources, Michigan Spark Grants will support projects that provide safe, accessible public recreation facilities and spaces to improve people's health, introduce new recreation experiences, build on existing park infrastructure and make it easier for people to enjoy the outdoors.

Applicant Eligibility

- Applicants must be local units of government (tribal, county, city, village or township) or public authorities legally established to provide public recreation.
 - All projects must take place on public land.
 - A resolution from the highest governing body is required to apply for a spark grant.
- * No match required for projects under \$1 Million.

Unique to Spark

01

An eligible financial match is encouraged but not required*

02

A community planning process is encouraged but not required

03

A streamlined application

What Types of Projects Are Eligible?

Must support and enhance neighborhood features that promote improved health and safety outcomes – or address the increased repair or maintenance needs in response to significantly greater use of public facilities that have been adversely affected by the COVID-19 Pandemic.

May include:

- Development, renovation or redevelopment of public recreation facilities.
- Provision of recreation-focused equipment and programs in public recreation spaces (**ex: playground equipment, walking paths**). Single park sites or contiguous trail on public land –must be open and accessible to public for 20 years. *
- Studying, planning, designing –only grants are NOT eligible (an awarded grant will allow for 25% to be eligible for planning & design as part of an infrastructure project).
- Funds must be committed to third-party contracts by Dec. 31, 2024.
- Projects must be completed by October 31, 2026.

**DNR leaving it up the applicant to define what recreation means to their community.*

**The proposed project must meet the accessibility requirements of the 2010 Americans with Disabilities Act design standards; including all proposed recreation facilities, access routes from the proposed facilities to parking and relevant support facilities.*

What Types of Projects are Ineligible

- Facilities or stadiums for sporting events
- Art displays, fountains, facilities for historical interpretation
- Sidewalk projects in road rights-of-way and do not exhibit qualities associated with recreation trails
- Invasive species removal, shoreline stabilization or erosion control not associated with the development of recreation facilities at the site.
- Municipal infrastructure (electrical transmission line, sewer mains, water mains, etc.)
- Improvements to public roadways
- Land acquisitions

Financial Details

- Minimum grant request: \$100,000
- Maximum grant request: \$1,000,000

What Costs Are Ineligible?

- Maintenance
- Indirect/overhead greater than 10% of total project costs without an approved Negotiated Indirect Cost Rate Agreement
- Tuition and fees, conferences, travel, lodging, meals, group meals and mileage
- Costs incurred outside of the project period specified in the project agreement or amendment
- Salaries/fringes of individuals not working on the project directly
- Sales tax for exempt agencies

How Will Projects Be Selected?

Applications that address existing park infrastructure will be given priority. Scoring will be based on the following listed in order of priority:

- Public benefit and anticipated outcomes
- Financial and social considerations
- Access to project site
- Access to new opportunities for people of all abilities
- Clarity of scope and ability to execute
- Renovation and long-term maintenance

Three Rounds/Opportunities for Funding

Three rounds of applications – can submit up to 3 times. If you submit 3 applications will carry over 2 and 3 until the other rounds. Or you can submit one per round.

2022 Spark Grants schedule

The grant application will launch in October and stay open for six weeks, with first-round grants awarded by the end of 2022. There will be two more rounds of applications and grant awards in 2023.

Date	Action
OCT. 24, 2022	Application period starts in MiGrants
DEC. 19, 2022	Round one applications due
JAN. 2023	Round one grants awarded
TBD 2023	Rounds two and three will open and be awarded
DEC. 31, 2024	All awarded grant funds must be committed to third-party contracts
OCT. 31, 2026	All grant funded projects must be completed

What documentation is needed to complete the application?

- Site control form and deed or agreement by landowner (site control).
- Resolution by the highest governing body to apply for the funds.
- Site plan of proposed improvements *(does not have to be an engineered plan/can be drawn by hand for application purposes)*.
- Bid documents and plan specs (if developed at the time of application submittal).
- Permits (if developed at the time of application submittal).
- Additional materials may be required after the application is finalized.

Application Pages

The application is six pages long. The authorized official will be required to initiate the application. Once initiated, anyone with an organizational role will be able to modify the application pages. You may save the page you are working on and come back to edit or complete the materials later. The pages are:

- Applicant information – Basic information of the site, project name, etc.
- Narrative details part 1 – Public benefit and anticipated outcomes, financial and social considerations, and access to the project site.
- Narrative details part 2 – Access to new opportunities for people of all abilities, clarifying of scope and ability to execute, new construction, renovation and future maintenance.
- Financial details – Project budget categories and amount requested.
- Additional information – Optional
- Certification by AO (authorized official) – Check to certify the application.

Spark opportunities Acme Township

Bayside Park

- Continuation of pathways
- New pavilion
- Playground Equipment
- Renovation of building into rental and storage space
- Other opportunities in Bayside or beyond?





Conclusion:

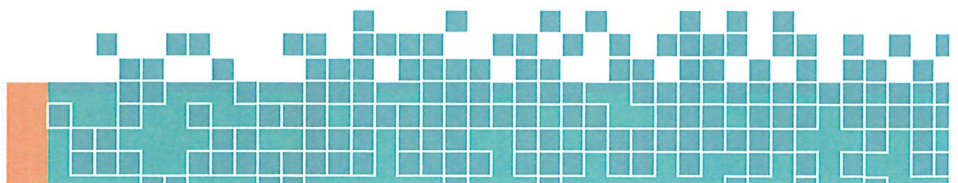
In summary, Safety Light installation can help sportsmen and women at the boat launch, and benefit the community. The dock safety, boat ramp safety, and a marker for returning recreationalists after dark are huge benefits to all using Sayler Park

Please respond (email is preferred) with your approval and or suggestions and we will get underway with setting these poles up in time for the upcoming walleye opener 2023.

Thanks much!



Michael P. Radcliffe
President, NWMI Fishing Club
nwmifishing@gmail.com
2133 Krumlauf Road
Kalkaska, MI 49646
(231) 735-6890





400W Solar Street Flood Light Outdoor, NORSUN Motion Sensor Dusk to Dawn Solar Light with Remote Control IP67 Waterproof for Parking Lot, Stadium, Garden, Pathway(Bright White)

Brand: NORSUN
★★★★☆ 73 ratings

Price: **\$199.95** & FREE Returns

Get \$50 off instantly. Pay \$149.95 upon approval for the Amazon Rewards Visa Card.
Available at a lower price from other sellers that may not offer free Prime shipping.

Brand	NORSUN
Material	Aluminum, Glass
Style	Modern
Light Source Type	LED
Wattage	400 watts

About this item

- **Solar Street Light:** Super bright LED solar street light outdoor, 400W 864 pcs LED beads 10000 Lumens superior quality solar parking lot light, meet the lighting of larger venues. IP67 Waterproof and Weather resistance. Best choice for electricity bills free. (If you need an 16.4ft extension cable, pls search it by B08SJQWXY)
- **Light Sensor & Motion Sensor Modes:** Dusk to Dawn, continuous lighting for 14 hours(fully charged). It will automatically switch to highlight mode when it detects an object moving. It can keep your house secure when strangers approach. Maximum power saving.
- **Remote Control:** Remote control providing convenience use in long distance for multi modes. Induction mode, constant light mode, timing mode. The remote control distance approx. 26ft.(battery included)
- **Easy Installation:** No electrical connection needed. 2 ways of installation, one is mounted on the wall, one is mounted on the pole with a diameter of 2 to 4 inch. (assembly accessories set included)
- **2 Year After-sales Service:** We provide worry-free 24-month After-sales service. For any questions about the product, please feel free to contact our friendly customer service. We promise you 100% SATISFACTION.

\$199.95
& FREE Returns

FREE delivery: **Thursday, March 11** Details

Fastest delivery: **Sunday, March 7**
Order within 5 hrs and 51 mins Details

Select delivery location

In Stock.

Qty: 1

Add to Cart

Buy New

Secure transaction

Ships from: Amazon
Sold by: NORSUN
Packaging: Shows what's inside. T...

Details

Add a Protection Plan:

4-Year Protection for **\$29.99**

3-Year Protection for **\$21.99**

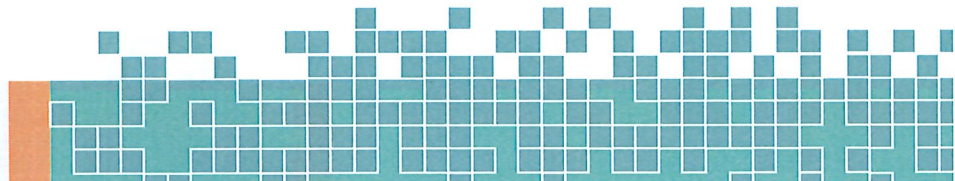
Add a gift receipt for easy returns

Add to List

We have installed these lights at our homes and outbuildings, Lake Leelanau and Silver Lake and find them to be the best of all available. We have seen zero maintenance need or functional failures with the lights that we have used for over 2 years now and are completely satisfied with their performance.

Financials:

\$2000.00 from Acme Township would cover the purchase of the 4 lights we need (2 at the ramp and 2 in the parking lot), 2 steel poles with LineX treatment, concrete to install them, and transportation costs for the heavy equipment to install them. We have club member labor, tools and heavy equipment laid on for installation. We have confirmed that the steel poles and the LineX treatment are also available and we can begin preparing those now.





build on the success of the township and your management of lake access and would complement the existing facilities nicely.

Solutions and approach:

First, our locations of light poles will be pre-approved from the township and “Dig 411” to ensure we are not in an area with any other underground hazards.

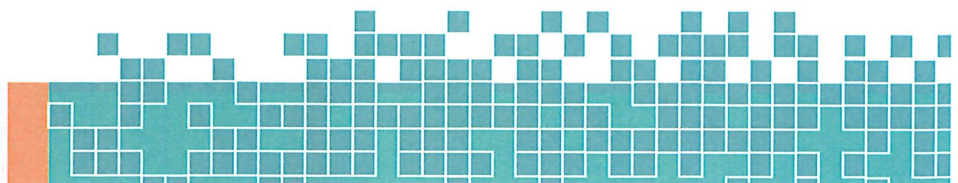
We plan to erect simple, functional and fashionable lights on poles in two areas of Sayler Park. Two poles will be erected. One near the front (top) of the boat ramp close to the water, and one at the tie-down area.

Two more lights will be erected in the parking lot area. These lights have no requirement for electric installation (solar charged) and no maintenance required.

The safety lights will have the following components:

A 20-foot LineX’d steel pole (4’ in the ground, 16’ above the ground) with concrete.

A 400-watt Outdoor Solar Flood Light with a motion sensor, dusk to dawn feature with a white light. Picture below.





Safety Light Proposal at the Sayler Park Public Boat Launch

Executive Summary:

The NWMI Fishing Club (NWMI FC) is the leading fishing organization in NWMI from Manistee to the Straights of Mackinaw. We are a 501c(3) non-profit conservation organization formed to promote a healthy and balanced Great and Inland Lake Fishery and safe and ethical angling. As discussed in your recent township meeting, The NWMI FC would like to organize for and erect safety lights at the Sayler Park. We have verbal support from the township officials and our Club Board of Directors, and we are now ready to put our plan into execution.

The safety lights we would like to install would provide illumination for dock safety, boat ramp safety and a marker for returning recreationalists after dark. The safety lights would feature maintenance free galvanized and LineX'd poles, maintenance free solar lights, and a dusk till dawn automated sensor system. These lights would provide for convenience, speedier and safer launch and load times, and they would appeal to fisherman and recreational boaters as well.

Project background:

The NWMI FC has held many events at Sayler Park. Several instances of fishermen not being able to find the ramp after dark occurred as well as running over gear on the ramp, not being able to see ground guides and not being able to see the dock while backing were all experienced. We are passionate about improving facilities around the area (Discovery Pier and Elmwood Cleaning Station support, and East Bay Parking Lot, Silver Lake Lighting and Bingham Launch on Lake Leelanau for example) and we have consensus that this is a well-suited project for our members. Erecting these lights will

